



科猛技术 - 连接您与未来!
QOMOTECH, CONNECT YOU WITH THE FUTURE.

科猛技术

玻璃深加工领域水刀智能连线
自动化技术领导者!

—
QOMOTECH, THE LEADER OF WATERJET INTELLIGENT
CONNECTION AUTOMATICS TECHNOLOGY IN GLASS
PROCESSING FIELD.



更精准 更快速 更高压力 更节能 更降噪

QOMOTECH-INNOVATIONS 佛山市科猛创易科技有限公司

地址: 广东省佛山市南海区狮山镇招大创业园招北工业区 2 号 -7 号
Add:NO.2-7, zhaobei industrial zone, zhaoda pioneer park shishan town,
nanhai district, foshan city, guangdong province

电话 /Tel: 0757-6322 3096

传真 /Fax: 0757-6322 3097

售后服务专线 / After-sales service: 0757-6322 3092

网址 / Web: <http://www.qomotech.com>



官网



手机画册



佛山市科猛创易科技有限公司
QOMOTECH-INNOVATIONS

我们的目标是 ●●●

站在中国同行业的制高点!

比肩世界一流同类设备的
技术和性能!

Our goal is to stand in the commanding heights of the same industry in China, and to stand shoulder to shoulder with the world-class technology and performance of similar equipment!



关于我们

ABOUT US

佛山市科猛创易科技有限公司 是专业从事超高压水射流切割设备 (简称“水刀”) 的研发、生产、销售与服务的高新技术生产厂家。

我们在悬挂稳固钢结构和液压流体力学方面有着多年的研发、方案设计与实施的丰富经验, 为水刀设备的生产制造打下了优质而坚实的技术保障基础。

多年来我们不断地创新、打造和提升着在超高压水射流方面的技术优势, 一直致力于对水刀设备更高性能的挖掘。

QOMOTECH-INNOVATIONS is a high-tech manufacturer specializing in the research and development, production, sales and service of ultra-high pressure water jet cutting equipment (referred to as "water knife"). We have many years of experience in research and development, scheme design and implementation of suspension stable steel structure and hydraulic fluid mechanics, which has laid a good and solid technical support foundation for the production and manufacturing of water knife equipment.

Over the years, we have continuously innovated, created and improved the technical advantages in the field of ultra-high pressure water jet, and have been committed to the exploration of higher performance of water knife equipment.

专利证书 PATENT CERTIFICATE



小尺寸玻璃加工自流转连线水刀

SMALL SIZE GLASS PROCESSING AUTOMATIC FLOW CONNECTING WATER JET



产品特点 Product Features

该系列设备专为家电/厨电面板等小尺寸玻璃连线生产而开发，具有自动进出料、自动扫描导图、自动定位、多工位加工、自动清洗等功能，可实现全自动无人化操作，多工位加工，便捷高效。该系列设备亦可根据客户需求定制开发。

This series of equipment is specially developed for small glass connection production such as home appliances/kitchen appliances panel, with automatic input and exit, automatic scanning map, automatic positioning, multi-station processing, automatic cleaning and other functions, can realize automatic unmanned operation, multi-station processing, convenient and efficient. This series of equipment can also be customized according to customer needs.

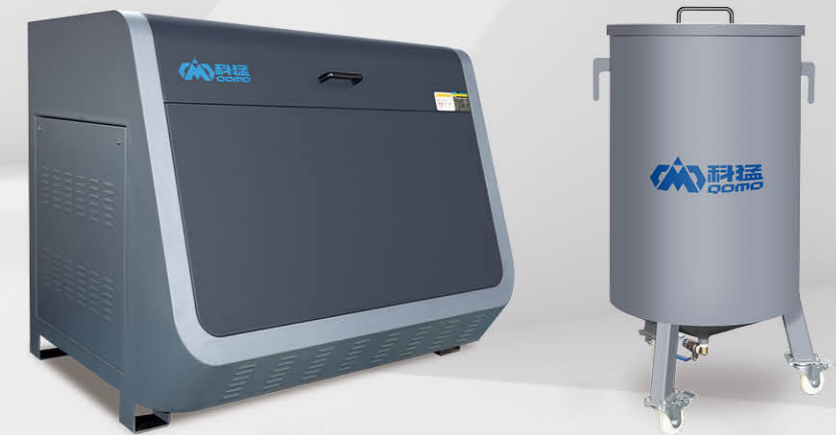


主要技术参数 Main Technical Parameters

外形尺寸 Overall dimension	6000x2100	
切割行程 Cutting stroke	1000mmx750mmx250mm	
工位数量 Number of stations	2/4	
切割头 Cutting head	3轴双头 / 四头 3-axis double/quad	
精度 Precision	切割精度 Cutting accuracy	±0.1mm
	重复定位 Repeated	±0.01mm
物料转运形式 Material transfer form	吸盘 Sucker	
增压器 Supercharger	QOMO600 型大流量增压器 QOMO600 high flow supercharger	

大尺寸玻璃加工自流转连线水刀

LARGE SIZE GLASS PROCESSING AUTOMATIC FLOW CONNECTING WATER JET



产品特点 Product Features

该系列设备专为淋浴房、门窗玻璃等大尺寸玻璃连线生产而开发，具有自动进出料、自动扫描导图、无级定位、定点切割、自动清洗等功能，可实现全自动无人化操作，固定位置切割，便捷高效。该系列设备亦可根据客户需求定制开发。

This series of equipment is specially developed for the production of large-size glass connection such as shower room, door and window glass, with automatic input and exit, automatic scanning map, stepless positioning, fixed-point cutting, automatic cleaning and other functions, which can realize automatic unmanned operation, fixed position cutting, convenient and efficient. This series of equipment can also be customized according to customer needs.

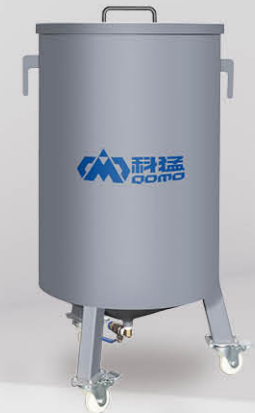


主要技术参数 Main Technical Parameters

外形尺寸 Overall dimension	6000x3200	
切割平台尺寸 Cutting platform size	1550mmx550mm	
最大切割范围 Maximum cutting range	2500mmx1500mmx50mm	
切割头 Cutting head	3轴 3-axis	
精度 Precision	切割精度 Cutting accuracy	±0.1mm
	重复定位 Repeated	±0.01mm
物料转运形式 Material transfer form	吸盘 Sucker	
增压器 Supercharger	QOM0450 型增压器 QOM0450 supercharger	

一体式悬臂三轴水刀

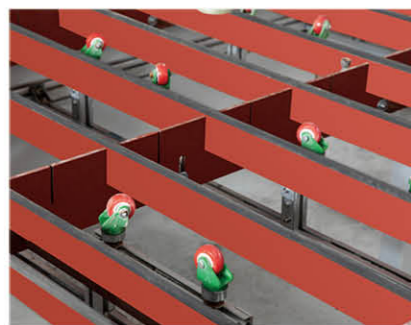
INTEGRATED CANTILEVER THREE-AXIS WATER JET



产品特点 Product Features

悬臂式三轴水刀可从3面上料，结构简洁，操作便捷，生产柔性强。自动升降平台可选配加装。

Cantilever type 3-axis water knife can be cut from 3 faces, simple structure, convenient operation, strong production flexibility. Automatic lifting platform is optional.

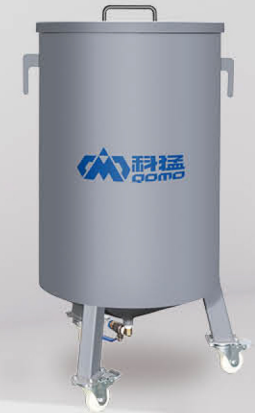


主要技术参数 Main Technical Parameters

型号 Model	QM1313	QM2010	QM2015	QM2515
结构形式 Structure type	悬臂式 Cantilever	悬臂式 Cantilever	悬臂式 Cantilever	悬臂式 Cantilever
切割台尺寸 Cutting table size	1500x1500mm	2100x1100mm	2100x1600mm	2600x1600mm
切割行程 Cutting stroke	X - 轴 X-axis	1300mm	2000mm	2500mm
	Y - 轴 Y-axis	1300mm	1000mm	1500mm
	Z - 轴 Z-axis	130mm	130mm	130mm
切割头 Cutting head	3轴 3-axis			
精度 Accuracy	切割精度 Cutting precision		±0.1mm	
	重复定位 Resetting		±0.01mm	
CNC 控制系统 CNC control system	交流伺服控制系统 Ac servo control system			
增压器 Supercharger	QOMO450 型增压器 QOMO450 supercharger			

龙门式三轴水刀

TRIAxIAL WATER KNIFE OF GANTRY TYPE



产品特点 Product Features

龙门式三轴水刀结构稳固，加工范围大，生产柔性强。自动升降平台可选配加装。

Gantry type 3-axis water knife has stable structure, large processing range and strong production flexibility. Automatic lifting platform is optional.

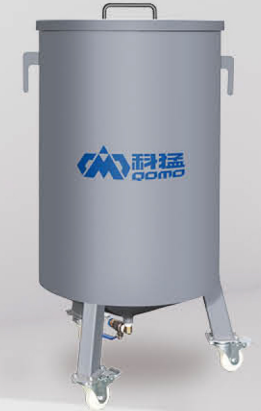
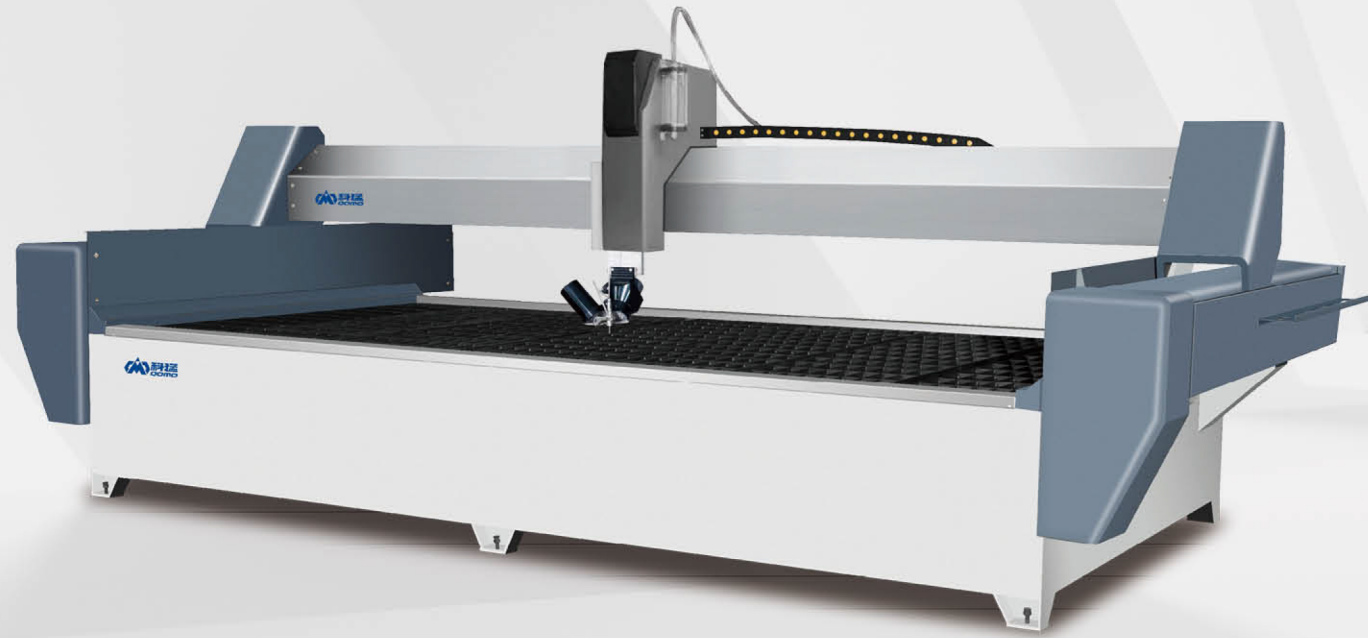


主要技术参数 Main Technical Parameters

型号 Model	QM2015	QM2515	QM3020	QM4020
结构形式 Structure type	龙门式 Gantry	龙门式 Gantry	龙门式 Gantry	龙门式 Gantry
切割台尺寸 Cutting table size	2100x1600mm	2600x1600mm	3100x2100mm	4100x2100mm
切割行程 Cutting stroke	X - 轴 X-axis	2000mm	2500mm	3000mm
	Y - 轴 Y-axis	1500mm	1500mm	2000mm
	Z - 轴 Z-axis	130mm	130mm	130mm
切割头 Cutting head	3轴 / 3轴双头联动 / 3轴双头分动 3-axis / 3-axis double-head linkage / 3-axis double-head split			
精度 Accuracy	切割精度 Cutting precision	±0.1mm		
	重复定位 Resetting	±0.01mm		
CNC 控制系统 CNC control system	交流伺服控制系统 Ac servo control system			
增压器 Supercharger	QOM0450 型增压器 / QOM0600 型大流量增压器 QOM0450 supercharger / QOM0600 high flow supercharger			

AB 五轴水刀

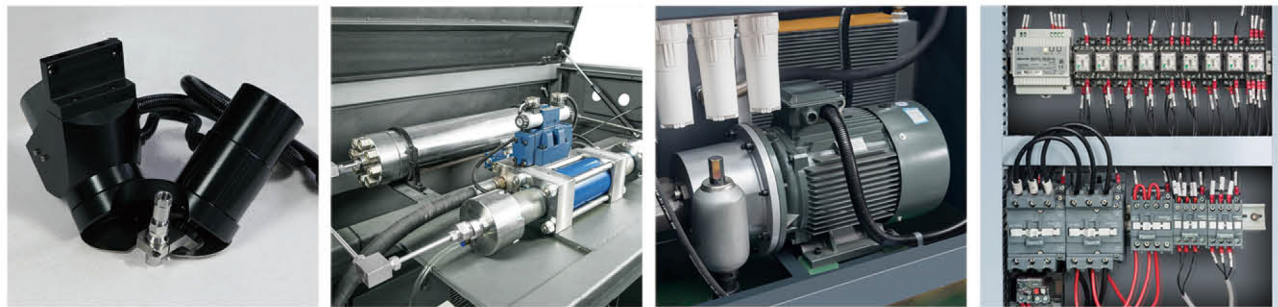
AB FIVE AXIS WATER KNIFE



产品特点 Product Features

AB 五轴水刀配备 AB 五轴切割头，可在切割中进行角度补偿，有效提高切割面的垂直度和精度；自动升降平台可选配加装。

AB shaft water knife is equipped with AB five-axis cutting head, which can compensate the Angle during cutting, effectively improve the verticality and accuracy of the cutting surface; Automatic lifting platform is optional.



主要技术参数 Main Technical Parameters

型号 Model	QM1313	QM2010	QM2015	QM2515	QM3020	QM4020	
结构形式 Structure type	悬臂式 Cantilever	悬臂式 Cantilever	悬臂式 / 龙门式 Cantilever/Gantry	悬臂式 / 龙门式 Cantilever/Gantry	龙门式 Gantry	龙门式 Gantry	
切割台尺寸 Cutting table size	1500x1500mm	2100x1100mm	2100x1600mm	2600x1600mm	3100x2100mm	4100x2100mm	
切割行程 Cutting stroke	X - 轴 X-axis	1300mm	2000mm	2000mm	2500mm	3000mm	4000mm
	Y - 轴 Y-axis	1300mm	1000mm	1500mm	1500mm	2000mm	2000mm
	Z - 轴 Z-axis	130mm	130mm	130mm	130mm	130mm	130mm
切割头 Cutting head	AB 五轴刀头 AB five-axis cutter head						
精度 Accuracy	切割精度 Cutting precision	±0.1mm					
	重复定位 Resetting	±0.01mm					
CNC 控制系统 CNC control system	交流伺服控制系统 Ac servo control system						
增压器 Supercharger	QOMO450 型增压器 / QOMO600 型大流量增压器 QOMO450 supercharger / QOMO600 high flow supercharger						

